



## Heavy-Duty Ditch Magnets

### Overview

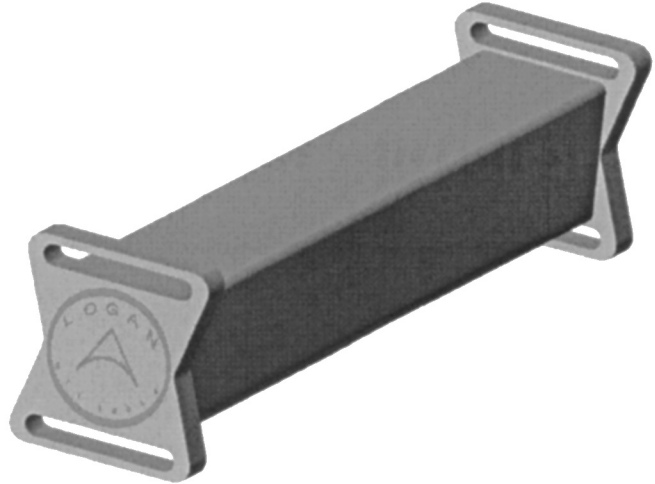
The Logan Ditch Magnet is the most effective means available to trap and remove metal particles from drilling mud missed by the shale shaker. The ditch magnet will capture all magnetized metals. During milling operations, the magnet is particularly valuable for the removal of mill cuttings and debris that cause wear on mud pumps and other equipment. It eliminates the problems caused by harmful debris returned downhole and is equally effective in both wash-over and fishing jobs.

### Construction

The clean, simple design eliminates the use of trays, gates, and other extra equipment. The magnet is encased in stainless steel and has integral handles at each end for lifting.

### Operation

The ditch magnet is most effective when it is suspended by soft line in the mud ditch before the shale shaker, or in the shaker discharge. Depending on milling rate, the unit should be cleaned with fresh or salt water and cuttings wiped away several times per day. The unit may be cleaned less often when cuttings come at a slow rate.



LENGTH (INCHES)	18	24	36			
<b>COMPLETE ASSEMBLY</b>	Logan Part No.	305-018	305-024	305-036		
	Bowen No.	...	152761	79162		
<b>KEEPER</b>	Logan Part No.	DMK-018	DMK-024	DMK-036		

*Logan Oil Tools reserves the right to change or discontinue designs without notice.*

#### Special Notes:

(1) Magnets shipped via air freight must include a Keeper set.

#### When ordering, please specify:

(1) Name and number of magnet